



Please read and comply with these instructions prior to the initial operation of your appliance. Retain these operating instructions for future reference or for subsequent possessors.

## Contents

Safety instructions	6
Function	6
Proper use	6
Environmental protection	6
Operating and Functional Elements	6
Start up	7
Operation	7
Shutting down	7
Maintenance and care	7
Troubleshooting	7
Accessories and Spare Parts	7
Technical specifications	8
CE declaration	8
Warranty	8

## Safety instructions

### For operator:

Please ensure that all users of the machine have read and understood the contents of this Operating Instructions Manual and are familiar with the local regulations about work safety. The users must have been technically trained to use this appliance.

### For users:

Before using the machine for the first time, read and observe these operating instructions and the accompanying brochure: Safety information for sweepers and vacuum sweepers, 5.956-250.

## Symbols in the operating instructions

### **Danger**

*indicates an immediate threat of danger. Failure to observe the instruction may result in death or serious injuries.*

### **Warning**

*indicates a possibly dangerous situation. Failure to observe the instruction may result in light injuries or damage to property.*

### **Note**

*indicates useful tips and important information.*

## Function

The two brush rollers of the appliance brush dirt from the passing steps of the escalator. The removed dirt is suctioned off and collected in a filter bag.

## Proper use

Use this appliance only as directed in these operating instructions.

- The appliance may only be used to clean the stepping areas of travellers/ escalators.
- The running or movement direction of the unit to be cleaned must be adjusted in such a way that the traveller/ escalator moves away from the machine.
- To clean the escalator, place the machine only at the lower end of the escalator.
- The appliance may only be equipped with original accessories and spare parts.

## Environmental protection

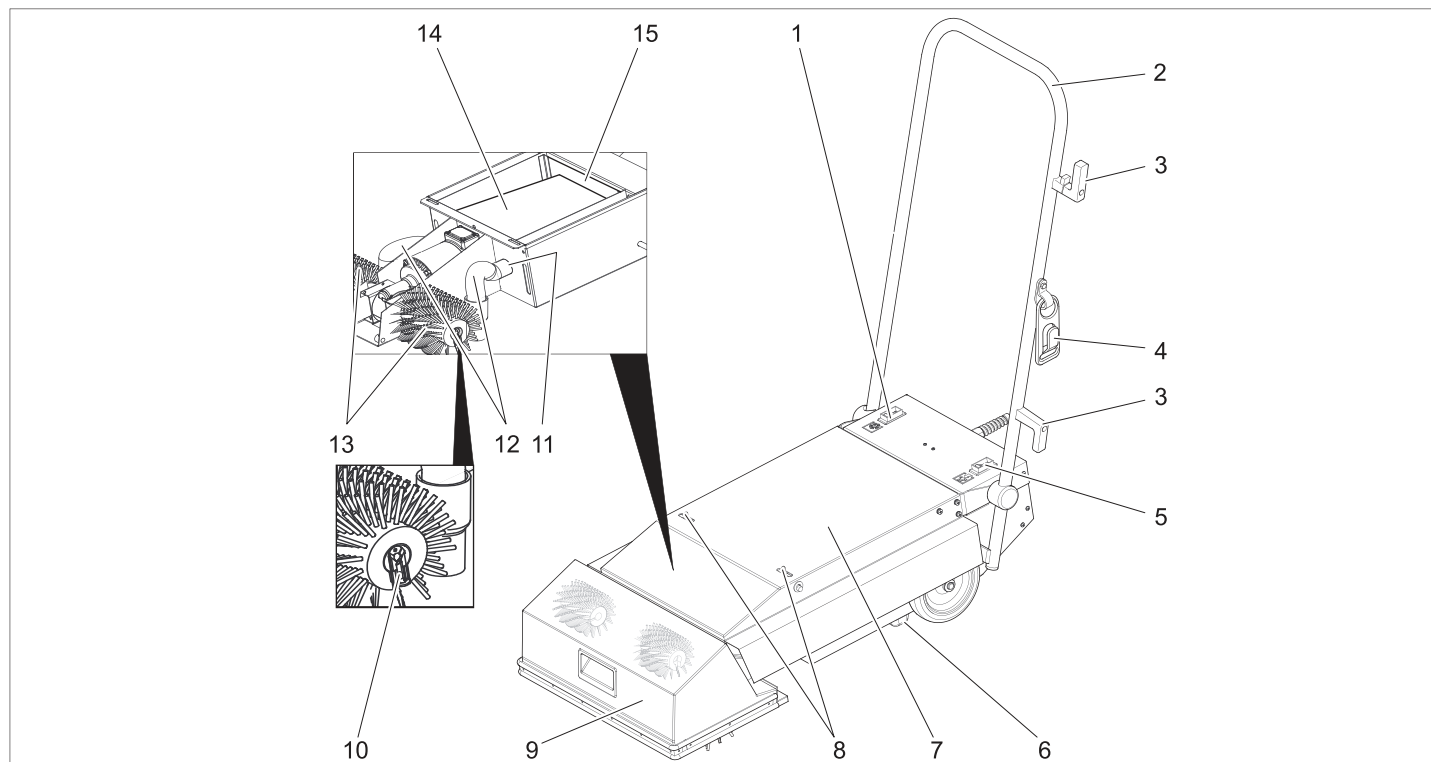


The packaging material can be recycled. Please do not throw the packaging material into household waste; please send it for recycling.



Old appliances contain valuable materials that can be recycled; these should be sent for recycling.. Batteries, oil, and similar substances must not enter the environment. Please dispose of your old appliances using appropriate collection systems.

## Operating and Functional Elements



- 1 Switch for brush drive
- 2 Push handle
- 3 Cable clamp
- 4 Strain relief clamp
- 5 Switch for vacuuming
- 6 Standing strip
- 7 Cover

- 8 Locking
- 9 Brush cover
- 10 Clip for brush holder
- 11 Connection nozzle
- 12 Suction hose
- 13 Brush roller
- 14 Filter bag

- 15 Motor filter

## Start up

- Check mains cable and plug for damage or breakage. Get them replaced only through customer service agent or an electrician.
- Check appliance for transport damage. Do not use the appliance if it is damaged.

### Insert brushes

- Disconnect the mains plug from the socket.
  - Open both latches on the appliance cover.
  - Open the device hood.
  - Pull both suction hoses off the brush cover.
  - Swing the brush cover to the front.
  - Remove clips from the brush rollers.
  - Slide brush rollers onto the brush shafts and lock by turning them into the towing arm.
- With brush rollers with bristles running diagonal to the rotating shaft, the bristle rows of these two brushes should form a V (viewed from the pushing handle).
- Slide the clips onto the brush shafts and lock.
  - Close brush cover.
  - Connect the suction hoses to the brush cover.
  - Close and lock the appliance cover.

### Transport

- Push the pushing handle back, so that the brush rollers lift off the floor.
- Push the appliance to the work area at the lower end of the escalator with the brush rollers lifted off the floor.

### Preparing the traveller/ escalator

#### ⚠ Danger

To be on the safer side, make sure that you know where the emergency switch-off button of the traveller/escalator is located.

- Block off a large area around the traveller/escalator while the cleaning is being performed.
- Switch on the traveller/ escalator.
- Ensure that the running direction of the traveller/ escalator is away from the machine.

## Operation

#### ⚠ Danger

Risk of injury!

- Hold the pushing handle firmly with at least one hand.
- Loose fitting clothes and jewellery can get entangled in the moving parts of the traveller/ escalator. Hence, remove jewellery and wear clothes fitting well on the body and safety shoes.
- Check bristle length of the brush rollers. If the bristles are shorter than 35 mm, there is a risk of damage to the traveller or escalator.

- Drive the machine in front of the traveller/ escalator platform.

#### ⚠ Danger

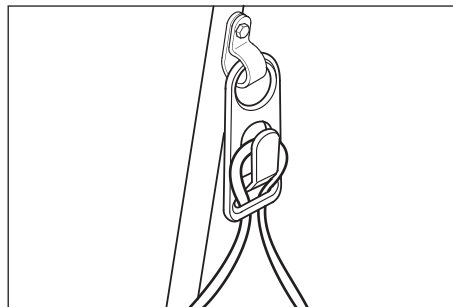
*Risk of injury and electrical shock! Always lay the extension cable in such a way that it does not get jammed or crushed and also does not cause somebody to stumble over it.*

*Do not run cable near the roller brushes.*

#### ⚠ Warning

*The maximum tolerable mains impedance at the electrical contact point (see Technical Data) must not be exceeded.*

- Plug in the main plug.



- Hook the loop of the mains cable onto the tensioning release hook.
- Place appliance in front of the escalator so that the standing strip is located on the fixed comb of the escalator.
- Switch on "suction" button.
- Switch on "brush drive" button. The cleaning process will start.
- After the escalator has made a full cycle, move the appliance to the side and thus clean the entire width of the escalator.

## Shutting down

- Switch off "brush drive" button.
- Switch off "suction" button.
- Remove the appliance from the escalator.
- Move the pushing handle into the park position to store the appliance: Fold the pushing handle in and lock using the latch in the cover.

## Maintenance and care

#### ⚠ Warning

*Pull out the mains plug before doing any maintenance or cleaning jobs!*

### Cleaning the device

#### ⚠ Warning

*Risk of damage! Do not wash down the appliance with water and do not use aggressive detergents.*

- Clean the outside of the appliance with a damp cloth which has been soaked in mild detergent.
- Remove the brush rollers, rinse under flowing water and let them dry.
- In order to avoid deformation of the bristles, store the appliance without load (see "Shutting down") or with the brush rollers removed.

## Replacing the filter bag

- Disconnect the mains plug from the socket.
- Open both latches on the appliance cover.
- Open the device hood.
- Pull the filter bag off both connection necks and discard.
- Clean the motor protection filter if the filter bag is damaged.
- Insert new filter bag and slide onto both connection necks.
- Close cover.

## Troubleshooting

#### ⚠ Danger

*Pull the plug from the mains before carrying out any tasks on the appliance.*

Fault	Remedy
Appliance cannot be started	Plug in the main plug.
	Check power supply and ensure proper supply.
	Check the mains connection cable for damages. Replace the defective mains cable.
Appliance stops during operation	Check the brush rollers for damages.
	Check connectors on mains cable, extension cables.
Appliance vibrates.	Check for correct installation of the brush rollers.
	Check the brush rollers for wear.
Suction capacity decreases	Replace filter bag or remove the blockage.
	Clean motor protection filter.

## Accessories and Spare Parts

Accessories	Part no.:	Description
Roller brushes, soft (standard)	6.680-002.0	Roller brushes for regular cleaning (appliance needs 2 pieces).
Roller brushes, hard	6.680-001.0	Roller brushes for regular cleaning, for removing stubborn dirt (appliance needs 2 pieces). Only for uncovered escalators, material may wear off the escalator if used regularly.
Filter bag	6.680-003.0	10 piece

#### ⚠ Danger

*Risk of injury and electrical shock! Repair works may only be performed by the authorised customer service.*

- Only use accessories and spare parts which have been approved by the manufacturer. The exclusive use of original accessories and original spare parts ensures that the appliance can be operated safely and troublefree.
- At the end of the operating instructions you will find a selected list of spare parts that are often required.
- For additional information about spare parts, please go to the Service section at [www.kaercher.com](http://www.kaercher.com).

## Technical specifications

Performance data		
Nominal voltage	V	220... 240
Frequency	Hz	50/60
Maximum allowed net impedance	Ohm	0.387+j 0.242
Rated power (max.)	W	1690
Suction engine output	W	2x750
Brush engine output	W	190
RPM brush rollers	1/min	290
Dimensions and weights		
Working width	mm	460
Brush diameter	mm	150
Width	mm	460
Length	mm	880
Height without pushing handle	mm	220
Unladen weight	kg	ap- prox. 44
Noise emission		
Sound pressure level (EN 60704-1)	dB(A)	73
Machine vibrations		
Vibration total value (ISO 5349)	m/s <sup>2</sup>	0,8

## CE declaration

We hereby declare that the machine described below complies with the relevant basic safety and health requirements of the EU Directives, both in its basic design and construction as well as in the version put into circulation by us. This declaration shall cease to be valid if the machine is modified without our prior approval.

**Product:** escalator cleaner

**Type:** 1.310-xxx

### Relevant EU Directives

2006/95/EC

89/336/EEC (+91/263/EEC, 92/31/EEC, 93/68/EEC)

### Applied harmonized standards

EN 55014-1: 2000 + A1: 2001 + A2: 2002

EN 55014-2: 1997 + A1: 2001

EN 60335-1


EN 60335-2-69

EN 61000-3-2: 2000 + A2: 2005

EN 61000-3-3: 1995 + A1: 2001

### 5.957-876

The undersigned act on behalf and under the power of attorney of the company management.

  
H. Jenner

  
S. Reiser

Alfred Kärcher GmbH Co. KG

Alfred Kärcher-Str. 28 - 40

D - 71364 Winnenden

Phone: +49 7195 14-0

Fax: +49 7195 14-2212

## Warranty

The warranty terms published by our competent sales company are applicable in each country. We will repair potential failures of your appliance within the warranty period free of charge, provided that such failure is caused by faulty material or defects in fabrication. In the event of a warranty claim please contact your dealer or the nearest authorized Customer Service center. Please submit the proof of purchase.